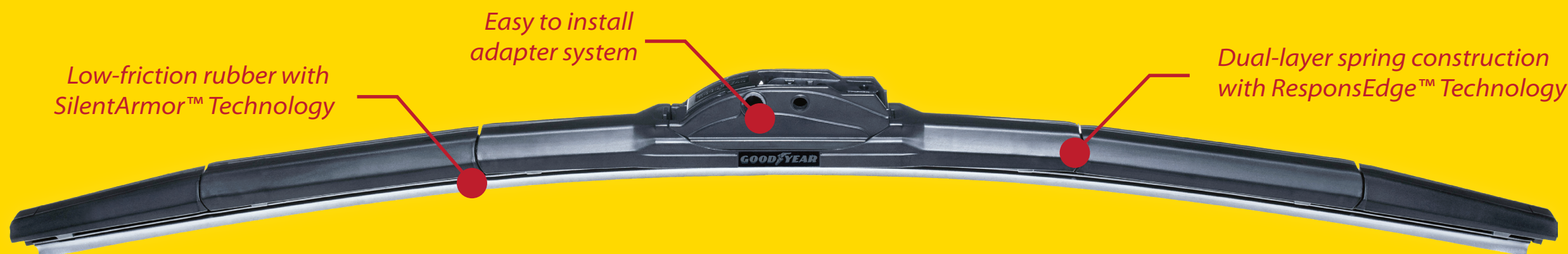


# GOOD YEAR ASSURANCE® WEATHERREADY®

WIPER BLADES

The advanced *Hybeam* design is reinforced with a dual-layer steel construction, creating a superior wiper blade for all weather conditions. Durability tested for 3,000,000 wipes.



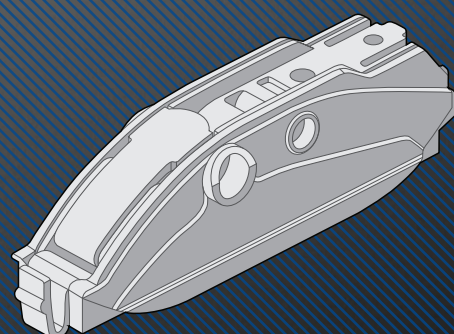
## ADAPTER REFERENCE GUIDE

HOOK (9X4, 9X3)	SIDE PIN (3/16", 1/4")	BAYONET	LARGE PUSH BUTTON (19 mm)	SMALL PUSH BUTTON (16mm)	PINCH TAB	SIDE LOCK (17mm, 22mm)
H-adapter	H-adapter	H-adapter	B + SA15	B-adapter	B + A13	C + B holder



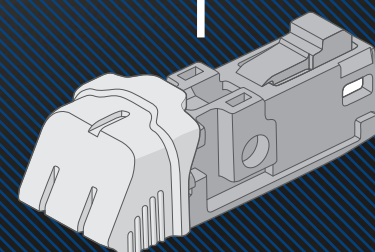
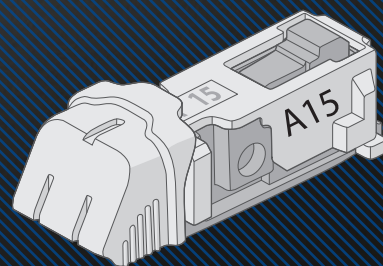
ALL SEASONS

Designed and assembled in the USA with global components



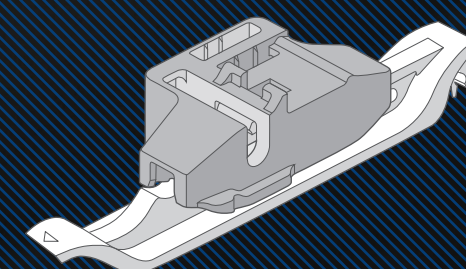
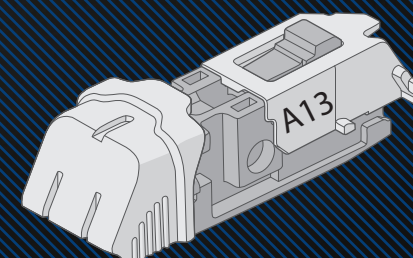
H-Adapter

B-Adapter + A15 Sleeve



B-Adapter

B-Adapter + A13 Sleeve



C-Adapter + B-Holder